

Juglandaceae - walnut family

Juglans nigra

black walnut



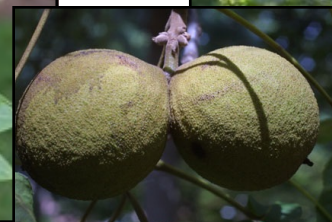
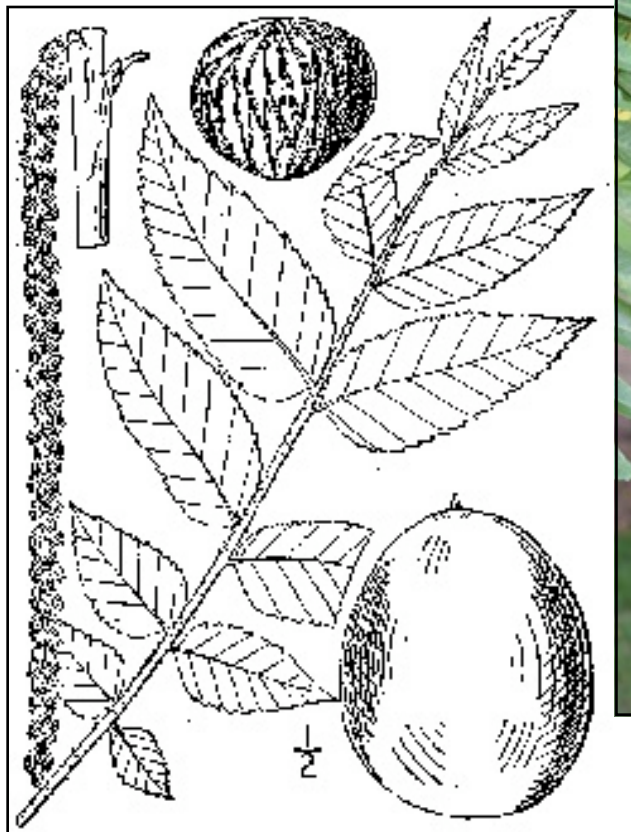
Sight ID characteristics

Vegetative Features:

- **Leaf:** alternate, pinnately compound, deciduous - 12-24" long with 9-23 leaflets sessile on puberulent rachis. Leaflets lanceolate-ovate, 2-6" long, serrate, terminal leaflet small.
- **Twig:** Stout, light brown, tan chambered pith; leaf scars 3-lobed, resembling a "monkey face".
- **Bark:** dark brown to grayish black, tightly furrowed.

Reproductive Features:

- Monoecious, male flowers in catkins, female flowers in small clusters, 2 connate carpels with 2 plumose stigmas.
- Fruits globose 1 1/2-3", thick fleshy, yellow-green indehiscent husk enclosing a nut with a thick deeply corrugated shell.



NOTES AND SKETCHES

Juglandaceae - walnut family

Juglans cinerea

butternut



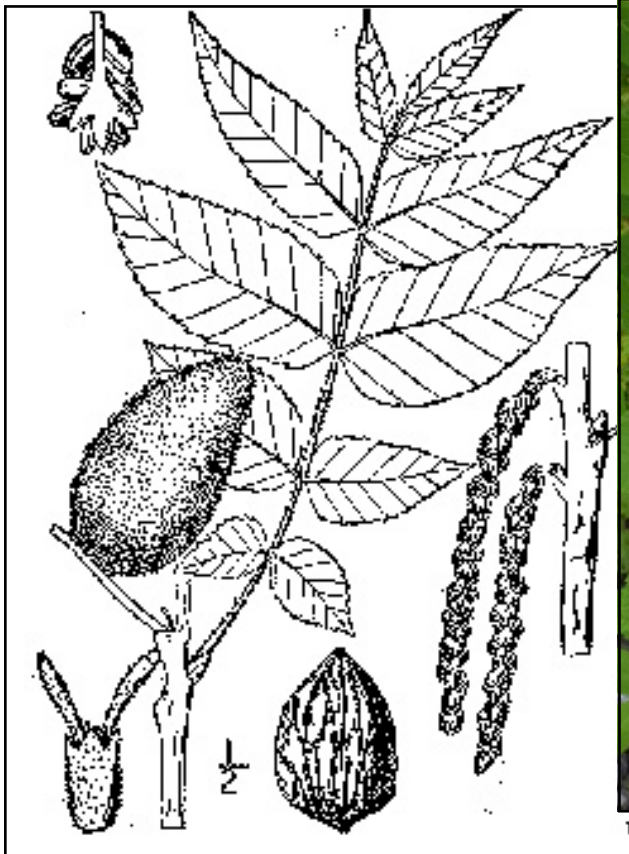
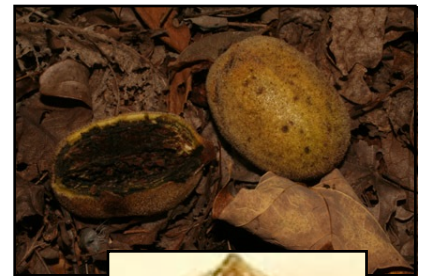
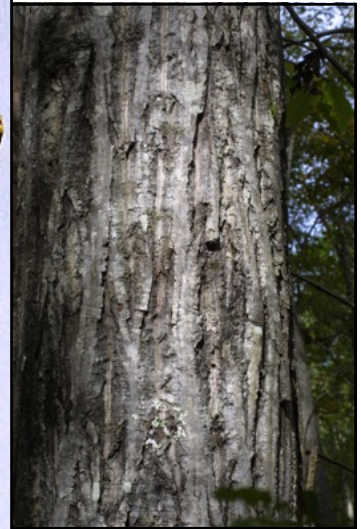
Sight ID characteristics

Vegetative Features:

- **Leaf:** alternate, pinnately compound, deciduous - 15-24" long with 11-17 leaflets sessile on pubescent rachis, leaflets oblong-lanceolate, 2-4" long with serrate margins, terminal leaflet large.
- **Twig:** Stout, yellow-brown to gray, dark brown, finely chambered pith; leaf scars large, 3-lobed.
- **Bark:** dark brown to grayish black, tightly furrowed.

Reproductive Features:

- Monoecious, male flowers in catkins, female flowers in small clusters, 2 connate carpels with 2 plumose stigmas.
- Fruits oblong-ovoid 1 1/2-3" long, husk relatively thick, green-bronze, indehiscent, glandular pubescent (sticky), enclosing a nut with sharp ridges.



NOTES AND SKETCHES

Juglandaceae - walnut family

Juglans regia

English walnut

CULTIVATED
escaped and
naturalized

Sight ID characteristics

Vegetative Features:

- **Leaf:** alternate, pinnately compound, deciduous - 5-9 leaflets that have entire to scarcely toothed margins. Terminal leaflet is bigger than the basal leaflets, aromatic.
- **Twig:** Stout, light brown, buff-colored chambered pith.
- **Bark:** gray with flattened ridges, developing diamond shaped pattern.

Reproductive Features:

- Monoecious, male flowers in catkins, female flowers in small clusters, 2 connate carpels with 2 plumose stigmas.
- Fruits globose, 1 1/2-3" diameter husk thinner than *J. nigra*.
- Nut is also thinner than *J. nigra* and is not as rough.

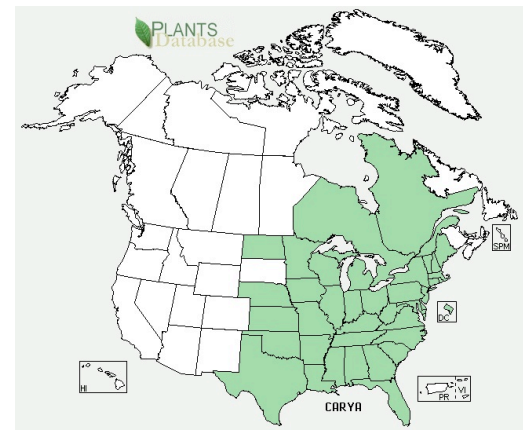


NOTES AND SKETCHES

Juglandaceae - walnut family

Carya

hickories



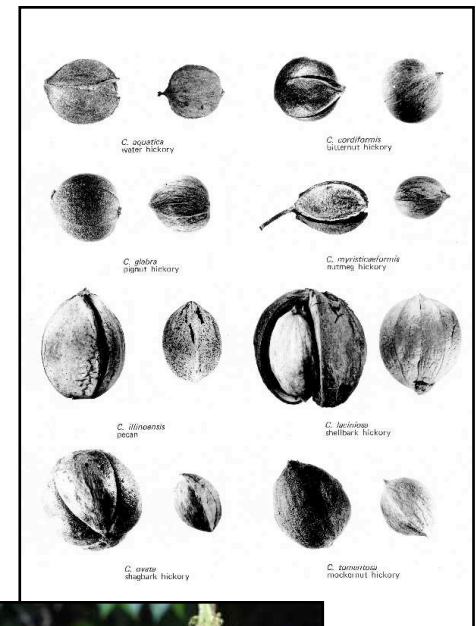
Sight ID characteristics

Vegetative Features:

- **Leaf:** alternate, pinnately compound, deciduous - 3-17 sessile or nearly sessile leaflets.
- **Twig:** stout, large terminal bud, 3-lobed leaf scars, solid pith.
- **Bark:** various - from gray and smooth to furrowed to shaggy.

Reproductive Features:

- Monoecious, male flowers in 3-branched catkins, female flowers in 2-10 flowered spikes, 2 connate carpels, 2 stigmas and are subtended by a bract and 3 bracteoles.
- Fruit is a nut enclosed in a woody, 4-sutured, dehiscent husk (at least partially). Nut may have four ridges but is otherwise smooth.



NOTES AND SKETCHES