

Visitors' Guide

Welcome

to

Your University of Idaho

UNIVERSITY ARCHIVES
UNIV. OF IDAHO LIBRARY

Un 8.2
V 82
1955

AT THE University of Idaho the latch string is always out. Campus-wide and sincere is this welcome to individuals and groups.

Most folk come for some specific purpose. It may be, for example, to visit a student, see something on one of the experiment stations, attend a meeting, or talk with some professor about a research project. While here most visitors also want to see more of the University, for it is a big concern with operations affecting every industry, every community in the big State of Idaho.

Turn the page and you will see an aerial drawing of the campus. It will help you find your way around.

Even alumni, who remember the University "back when," will find this map helpful. Of course, they will know the old buildings, but perhaps not

Science Building



Administration Building

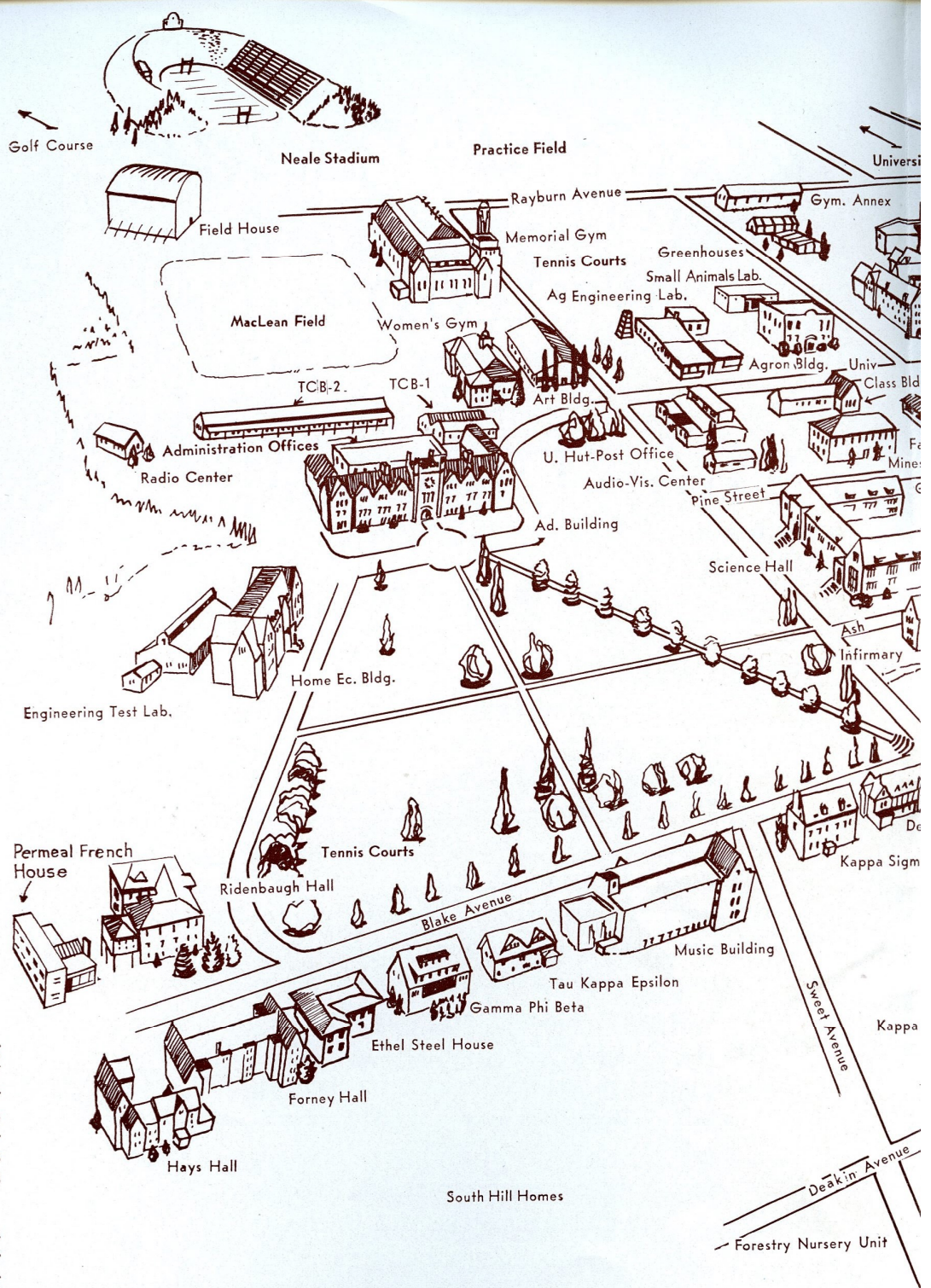
the new ones added to the campus during recent years.

For specific assistance in finding a department, student, or staff member call at the Campus Information Center, main floor of the Administration Offices Building. Feel free to stop any student, faculty or staff member and ask questions. Everyone at the University of Idaho wants to help you make the most of your visit.

Memorial Steps



The University of Idaho Campus



Be Sure to See...

THE LIBRARY . . . Heart of teaching and research, the University Library in the Administration Building contains nearly 170,000 bound volumes, more than 511,000 documents and approximately 61,000 maps. It receives regularly more than 1,000 periodicals and 88 newspapers.

THE NEW BUILDINGS . . . Following a building replacement program to assure efficiency and continued modernization, the University has constructed within the last eight years such fine replacements as the Agricultural Science Building, Music Building, Engineering Classroom Building, Home Economics Building, Small Animals Laboratory Building, TV Laboratory Building, four dormitories, and additions to Kirtley Engineering Laboratory, Administration Building, Student Union and Memorial Gymnasium.

WHERE STUDENTS LIVE . . . Idaho is justly proud of its fine student residences, eleven halls and twenty-two fraternities and sororities. Many surveys of University housing have commended the University of Idaho for its excellent student residence facilities.

THE STUDENT UNION . . . Here are student recreational facilities includ-

ing bowling alleys, ball rooms, reading and lounging rooms, cafeteria, student radio station, hobby rooms, etc. Considered one of the finest buildings of its kind west of the Mississippi, it is valued at about a million dollars and was constructed under a bond issue being paid off by revenue and fees—no state appropriations.

THE UNIVERSITY EXPERIMENTAL FARM . . . Home base for the University's statewide agricultural research and service program is the 800-acre University Farm, which adjoins the campus on the west. It is the home outdoor laboratory for the College of Agriculture.

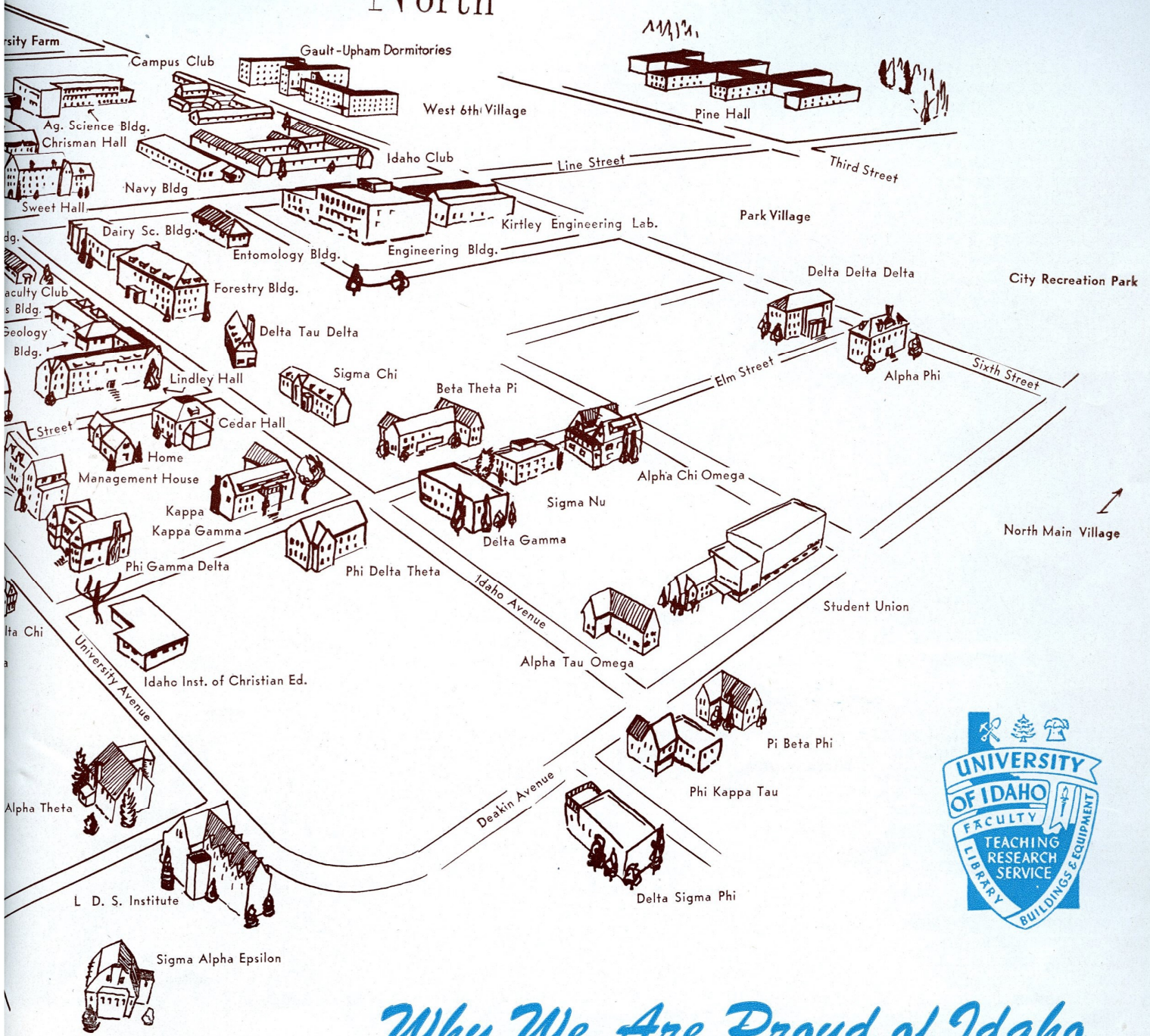
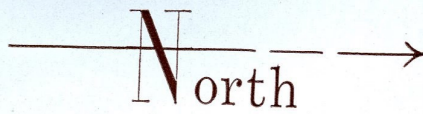
THE RADIOISOTOPES LABORATORY . . . The newest research tool of the atomic age is being used at Idaho in many

lines of research. A special laboratory has been provided for this purpose. Much of the equipment in it represents cooperation of the Atomic Energy Commission.

LATEST SCIENTIFIC INSTRUMENTS . . . Statistical machines that do in minutes mathematical computations that would require hours or days to do by ordinary means are in the Administration Offices Building. In Science Hall are an electron microscope which extends man's vision to objects a thousand times smaller than those easily studied with the ordinary microscope, and a spectograph which detects the presence of elements in quantities as minute as a ten-thousandth of a per cent.

THE FORESTRY NURSERY . . . To date

1955



Why We Are Proud of Idaho...

more than 10,000,000 seedling trees and shrubs have gone out to the farms of Idaho from this Federal-State cooperative forestry nursery. This has been enough to plant more than 10,000 acres of woodlots, shelterbelts and windbreaks. The 22-acre nursery is capable of producing 2,000,000 seedlings a year, ample to meet the needs of the fast-growing farm forestry activity in Idaho, and serves as a laboratory for College of Forestry students.

YOU WILL ALSO WANT TO SEE . . . The Infirmary, modern, well-equipped center of the Student Health Service . . . The 160-acre student golf course . . . The Memorial Armory-Gymnasium, dedicated to Idaho's war dead . . . The University Arboretum, oldest planting of its kind in the West.

- As you can see for yourself, the University has a beautiful setting. "One of the West's most beautiful campuses" and "an inspirational place to study" are ways in which visitors have described the University of Idaho.
- Created by act of the Territorial Legislature in 1889, Idaho's University is older than the State itself. More than 60,000 students have studied in its classrooms.
- The University of Idaho long has had chapters of Phi Beta Kappa, national honorary scholarship society; Sigma Xi, national honorary scientific society, and other learned and honorary societies that are significant marks of merit.
- The University of Idaho is one of the few institutions in the United States to have ROTC units in all major branches of the Armed Forces—Army, Navy with Marine Corps, and Air Force.
- Student living costs at the University of Idaho are moderate because a high percentage of the students live in dormitories on the campus. Idaho was one of the first institutions in the United States to provide cooperative dormitories for both men and women. The University takes pride in the fact that it is considered "budget-wise—both for the student and the taxpayer."

Our - Three Dimension Job . . . Teaching

Teaching is the University of Idaho's first and biggest responsibility. This involves more than 1,000 courses in nearly 50 recognized fields of learning, administered through eight colleges—Letters and Science (the liberal arts college), Agriculture, Engineering, Law, Mines, Forestry, Education, Business Administration—and the Graduate School.

The University's Summer School, offering nearly 200 courses, brings to the campus some of the nation's foremost educators. Emphasis here is to serve students who have teaching as their principal objective.

By correspondence, about 2,000 persons, mostly residents of Idaho, study in 150 courses. Agricultural Extension is another big and state-wide teaching service, with the farm field or home as the classroom. Four-H Clubs, which carry agricultural know-how to the rural youths, have about 12,500 members. Several hundred of these junior students come to the campus each June for an annual short course. A special summer camp is also held for high school students in music.



Research

The University of Idaho very properly is known as the "State's Research Center." Every one of the University's current 358 research projects—in eight major fields—is aimed at the solution of some problem confronting an industry or community in the State or to contribute basic knowledge that will assist in development of the State.

Important research is carried on at the Agricultural Experiment Station on the campus and at the six branch stations located throughout the State;

at the State Bureau of Mines and Geology laboratories; the Engineering Experiment Station; the Forest, Wildlife and Range Experiment Station, and the Graduate School.

Many research projects call upon the combined resources of several divisions. Forestry, Engineering, Agriculture and Mines, for instance, may team up on a single study. The fact that all major fields are represented at the University of Idaho is a distinct aid to research as well as teaching.

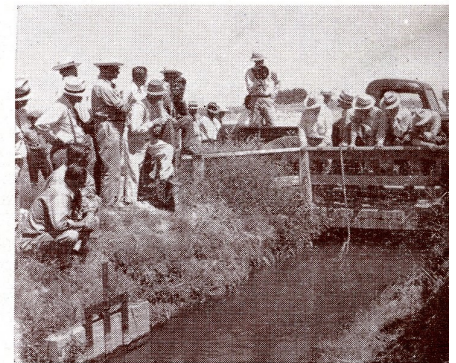


Service

Farmers, housewives, teachers, high school students, prospectors—in fact, folk in all walks of life, think of the University when they have a question. All divisions write well over 100,000 letters a year answering them. Biggest letter writer of all is the College of Agriculture, accounting for about a third of the total.

The College of Forestry Nursery distributes about 600,000 farm trees and shrubs every spring for utility and reforestation purposes. An average of 1,000 mineral samples come to the College of Mines each year for identification. The Engineering Testing Laboratory in one year has checked nearly 2,500 samples of road building and construction materials.

The University of Idaho is a big-time publisher. The College of Agriculture sends out to farmers annually about 250,000 bulletins and circulars. In the Placement Office are more than 5,500 personnel folders on Idaho graduates, making it a leading clearing house for the school officials of the state. University faculty members and Extension Specialists make hundreds of public addresses a year, serve as judges at dozens of fairs, livestock and 4-H shows. High schools look to the University Dramatics Department for plays. Staff members of the College of Education serve regularly on various state committees devoted to the improvement of instruction in the schools of the State.



Many visitors come to watch May Festival on Mother's Day.

Graduates trek back for Homecoming.

Many parents and friends of the University are visitors at Commencement.

