

*1912*  
NEW CENSUS EDITION

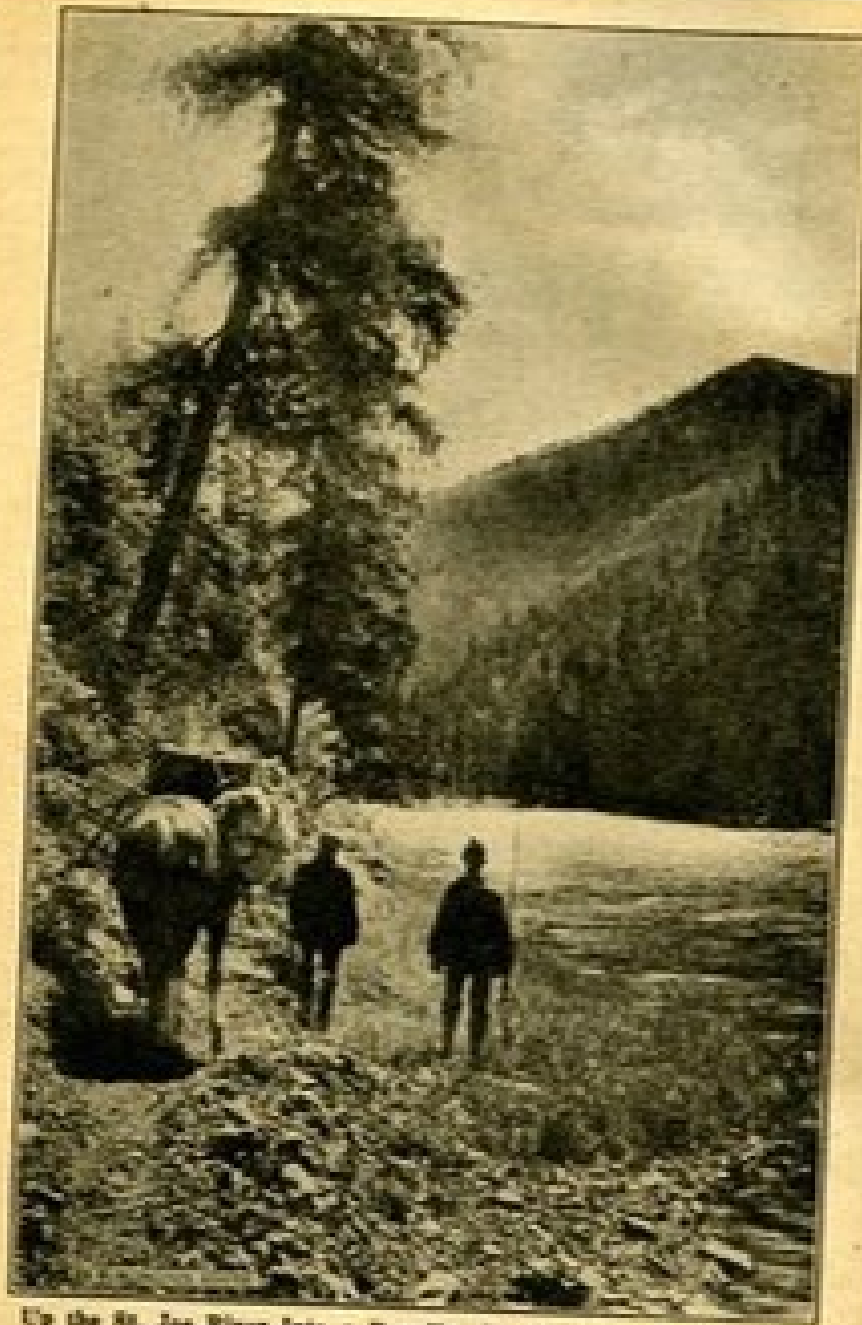
35¢ *M2 12*

# CLASON'S IDAHO

## GREEN GUIDE



THE CLASON  
MAP CO.  
CHICAGO ↔ DENVER



Up the St. Joe River into a Paradise for the Lover of Rod, Gun and the Glory of Great Timber Covered Mountain Ranges

# IDAHO

AS SEEN BY THE GREEN GUIDE

## FLASHES FROM A LIVE WIRE STATE

By George S. Claus

Idaho is a live wire state. One does not use this expression with only its ordinary significance in regard to Idaho. Not only in a business way is it a live wire state, but in a very literal way as well. The populous urban and rural districts are traversed with transmission lines dynamic with electrical power. This power is generated in abundance by using the water of the falls and rapids of the streams rushing from the mountains toward the ocean.

Electrical power is so cheap and plentiful in Idaho that it is probably used more generally here in homes and farms than anywhere else. In Idaho you may see the chimneyless farm house. The housewife does not bother with wood, corn cobs, coal or kerosene. The house is heated and lighted by electricity and the same energy boils the coffee and bakes the roast. It also churns the cream, grinds the feed for the live stock, keeps the water tanks full and not infrequently pumps enough water to irrigate the fields as well.

Power lines reach the farms and cities and even extend far up into the mountains to the mining camps. The tallow candle of the miner is now supplanted by the electric light and the wheezy steam engine with its leaky boiler has been supplanted by the motor to hoist the ore.

Even in the lumber camps the electric motor often operates the saws that rip the great logs into boards and square timbers.

Idaho is a state that thrills with the unseen force of the electric current. It possesses in abundance one of the greatest energizing forces of all time, cheap power. This will be the basis upon which great manufacturing enterprise will be built up.



Take a GREEN GUIDE with you, and you never will go wrong