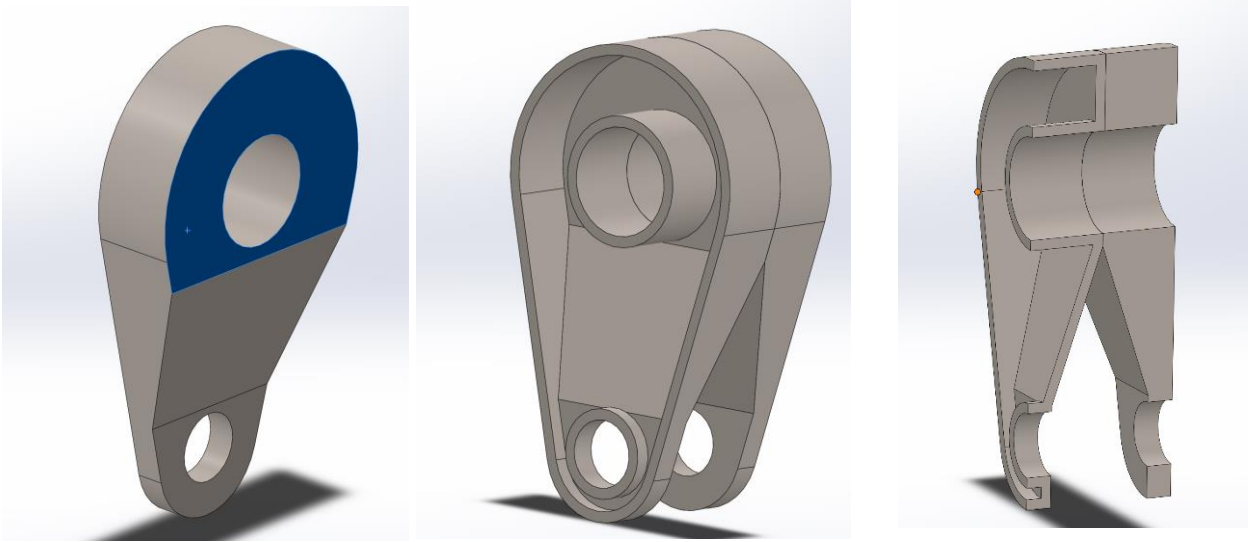
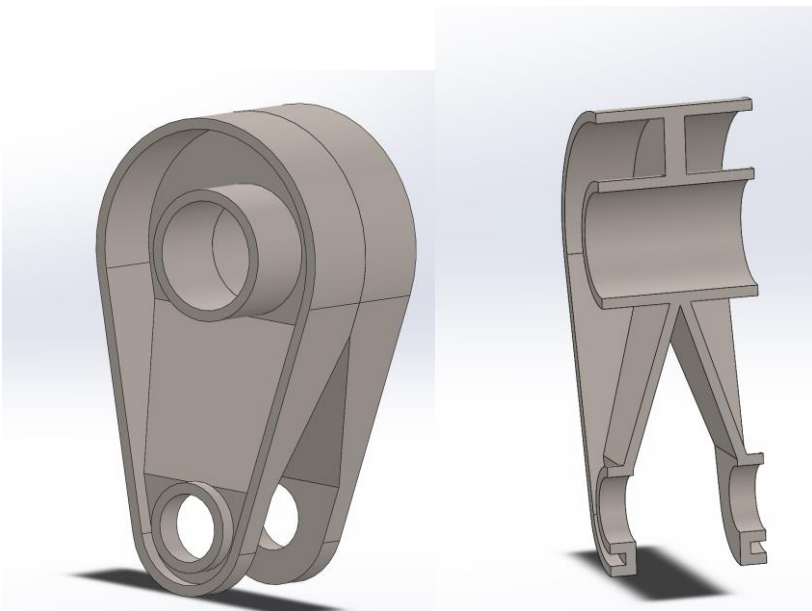


1. Create the part from the drawing, **units in mm!** Add **AISI 316 Annealed SS Bar** material to the part. If created correctly, mass should be **2068.30g**.
2. Next mirror the entire part across the face shown. Create a 4mm shell only on the original half.



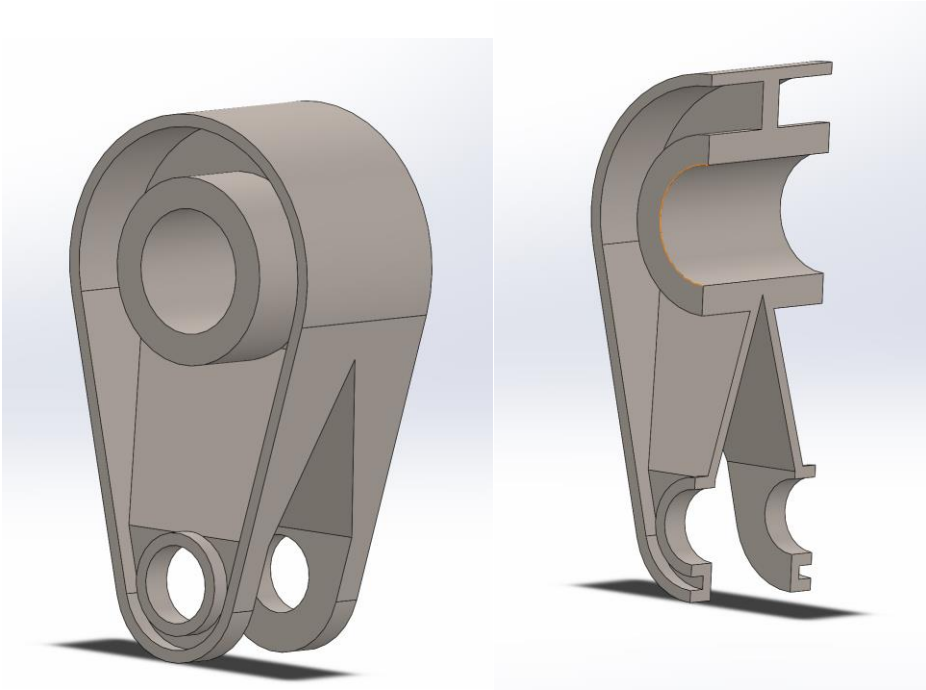
MASS: 2807.75g

3. Alter the part such that there is a 4mm mirrored shell on both halves as shown.



MASS: 1478.90g

- Next, alter the shell feature so the shell thickness is 10mm on the top hole as shown, while the rest remains 4mm thickness.



MASS: 1900.70g