

Inserting A System Diagram

Sometimes it can be nice to insert a drawing or system diagram in your EES file.

- 1.) Right-click and use “Copy” or use the “snipping tool” to copy a picture from a website or scanned file.

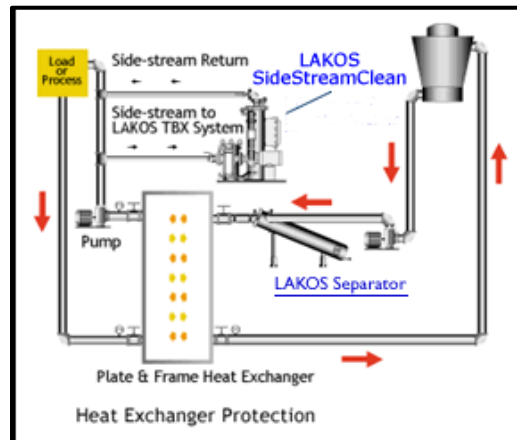


Figure 1: Image copied from Google using “windows snipping tool”.

- 2.) Click on “diagram button above EES equation window.



Figure 2: Diagram button in EES.

- 3.) The diagram window will open above the equations window. Use (edit→paste) to paste the drawing into the diagram window.

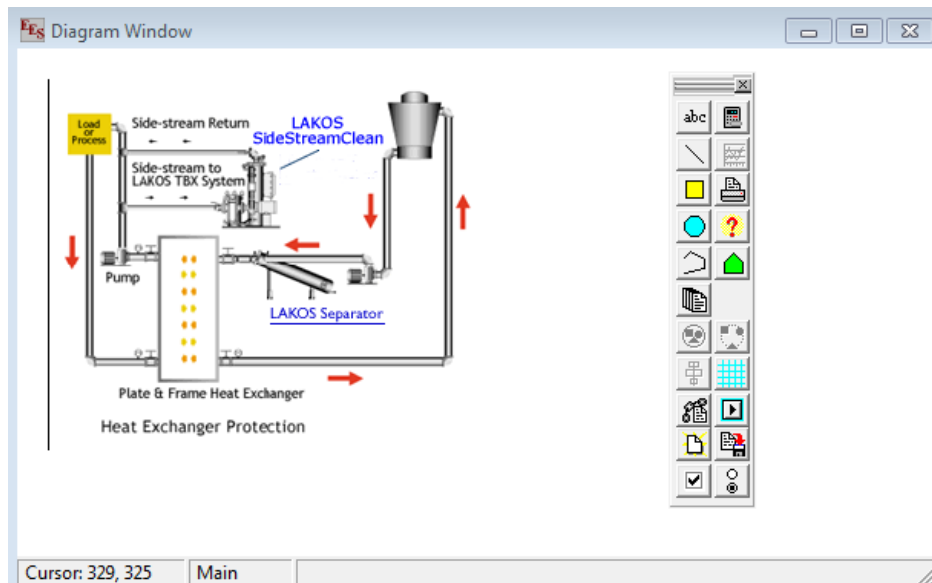


Figure 3: Diagram pasted in diagram window.

The diagram window and equations window can now be adjusted so that system processes can be observed while writing equations in the equations window. The diagram window can be printed with the main report, but the “diagram” box must be selected from the “print options”.