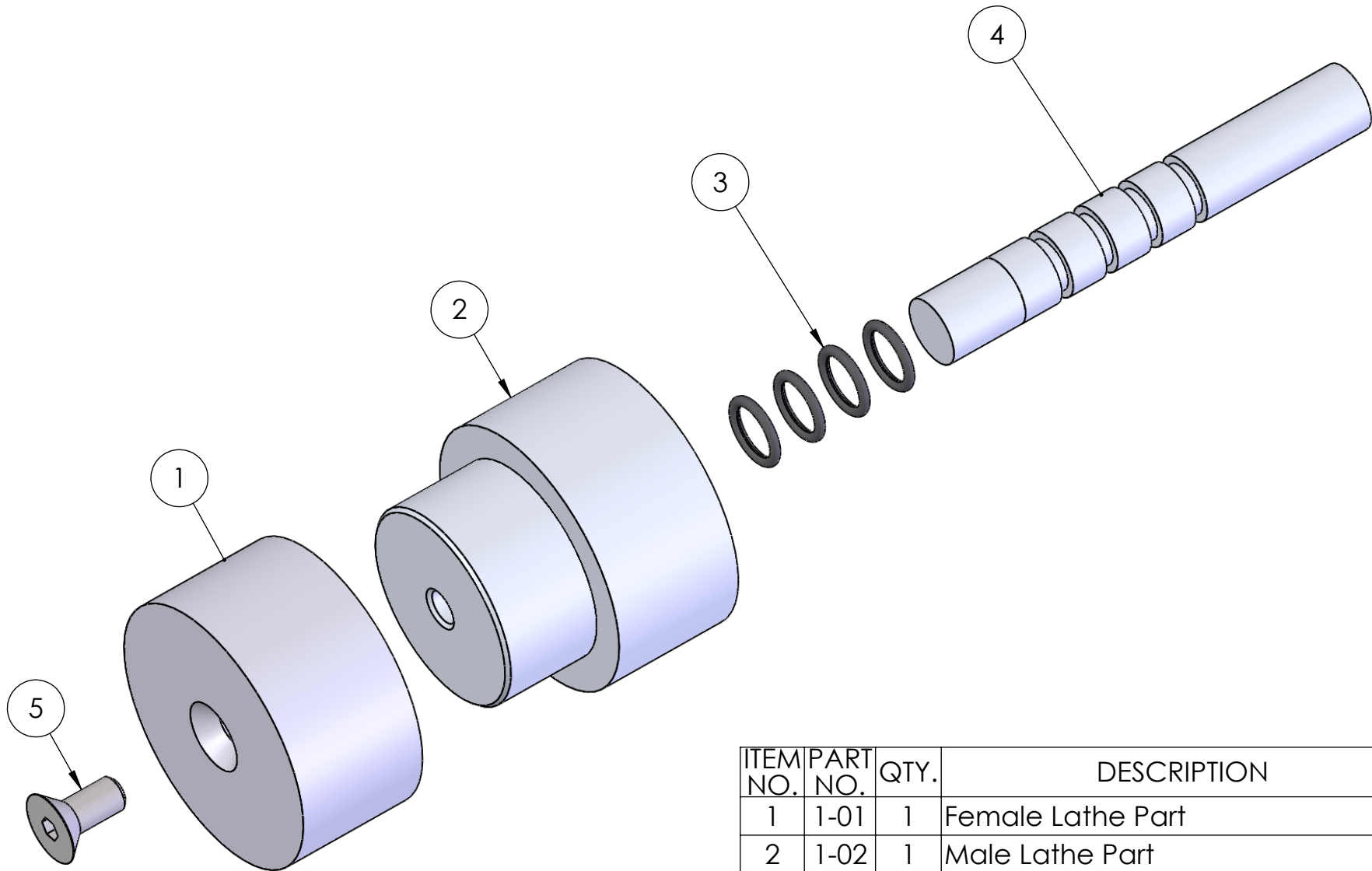
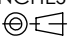


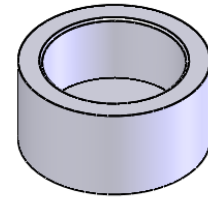
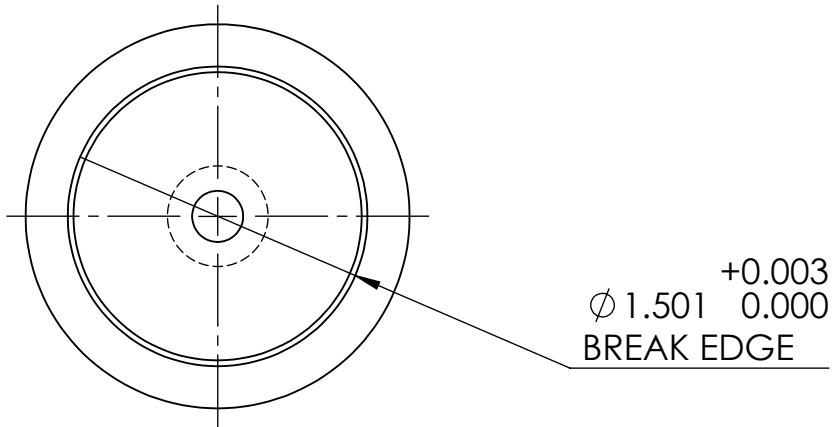
| ITEM NO. | PART NO. | QTY | DESCRIPTION                  | SHEET NO |
|----------|----------|-----|------------------------------|----------|
| 1        | 1-00     | 1   | Block Project Lathe Assembly | 2        |
| 2        | 2-00     | 1   | Block Project Block Assembly | 6        |

|   |   |  |                 |  |               |
|---|---|--|-----------------|--|---------------|
| <b>PROPRIETARY AND CONFIDENTIAL</b><br>THE INFORMATION CONTAINED IN THIS DRAWING IS THE SOLE PROPERTY OF UNIVERSITY OF IDAHO, ME DEPARTMENT. ANY REPRODUCTION IN PART OR AS A WHOLE WITHOUT THE WRITTEN PERMISSION OF UNIVERSITY OF IDAHO, ME DEPARTMENT IS PROHIBITED. |   | DIMENSIONS ARE IN INCHES<br>THIRD ANGLE PROJECTION |                 | Block Project<br>Coordinate w/<br>Notes      |               |
| DEFAULT TOLERANCES:   |   | DESCRIPTION: Block Project                         |                 | <b>UNIVERSITY OF IDAHO<br/>ME DEPARTMENT</b> |               |
| LINEAR:<br>X. ± .25<br>X.X ± .1<br>X.XX ± .01<br>X.XXX ± .002   | ANGULAR:<br>X. ± 2<br>X.X ± 1<br>X.XX ± 0.30' | CHECKED BY:  | DATE:           | PART #: 0-00 QTY: 1                          |               |
|   |   | DRAWN BY: Jake Gilles                              | DATE: 2/10/2017 | SCALE: 1:1                                   | SHEET: 1 OF 8 |
|   |   | FILE NAME: 0-00 Final Assembly.SLDPR               |                 |  |               |

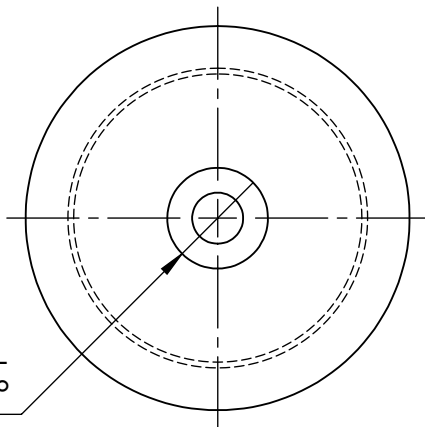
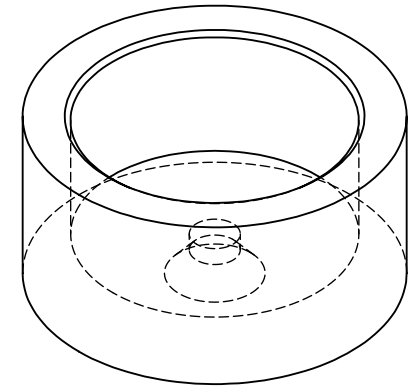
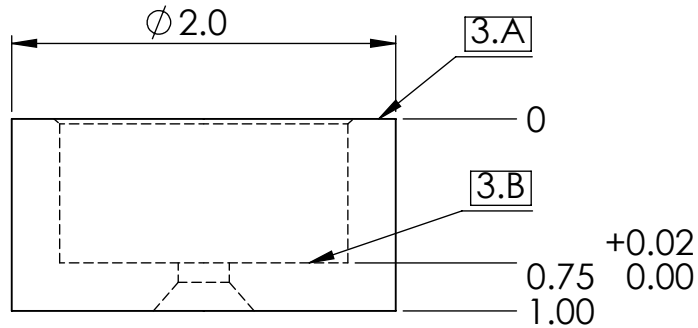


| ITEM NO. | PART NO. | QTY. | DESCRIPTION             | SHEET NO. |
|----------|----------|------|-------------------------|-----------|
| 1        | 1-01     | 1    | Female Lathe Part       | 3         |
| 2        | 1-02     | 1    | Male Lathe Part         | 4         |
| 3        | 1-03     | 4    | O-ring 2-012            | --        |
| 4        | 1-04     | 1    | Lathe Pin               | 5         |
| 5        | 1-05     | 1    | 1/4"-20 x 3/8" CS Screw | --        |

|  |  |   |  |  |  |
|--|--|---|--|--|--|
| <p><b>PROPRIETARY AND CONFIDENTIAL</b><br/>         THE INFORMATION CONTAINED IN THIS DRAWING IS THE SOLE PROPERTY OF UNIVERSITY OF IDAHO, ME DEPARTMENT. ANY REPRODUCTION IN PART OR AS A WHOLE WITHOUT THE WRITTEN PERMISSION OF UNIVERSITY OF IDAHO, ME DEPARTMENT IS PROHIBITED.</p> |  | DIMENSIONS ARE IN INCHES<br>THIRD ANGLE PROJECTION                     |  | Block Project<br>Coordinate w/<br>Notes  |  |
|  |  | MATERIAL:   |  |  |  |
| DEFAULT TOLERANCES:<br>LINEAR: X.±.25<br>X.X±.1<br>X.XX±.01<br>X.XXX±.002  |  | DESCRIPTION: Block Project Lathe Assembly<br>CHECKED BY: _____ DATE: _____<br>DRAWN BY: Jake Gilles DATE: 2/10/2017<br>FILE NAME: 1-00 Lathe Assembly.SLDPR |  | <b>UNIVERSITY OF IDAHO<br/>         ME DEPARTMENT</b><br>PART #: 1-00 QTY: 1<br>SCALE: 1:1 SHEET: 2 OF 8 |  |

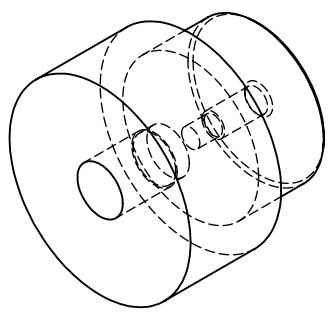
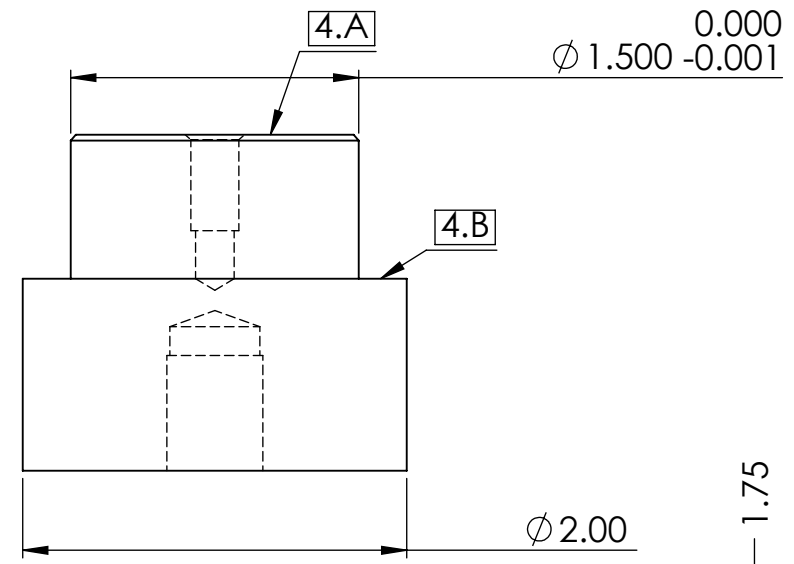


SCALE 1:2

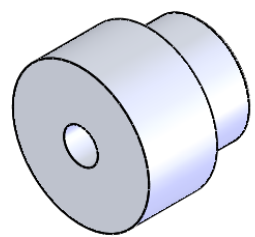


Ø 0.27 THRU ALL  
✓ Ø 0.52 X 82°

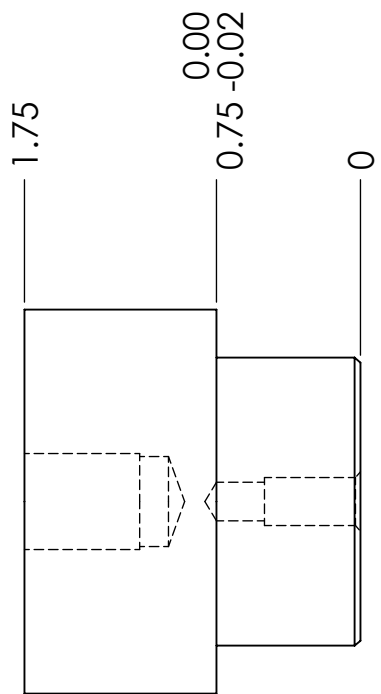
|   |             |  |                  |  |  |
|---|-------------|--|------------------|--|--|
| <b>PROPRIETARY AND CONFIDENTIAL</b><br>THE INFORMATION CONTAINED IN THIS DRAWING IS THE SOLE PROPERTY OF UNIVERSITY OF IDAHO, ME DEPARTMENT. ANY REPRODUCTION IN PART OR AS A WHOLE WITHOUT THE WRITTEN PERMISSION OF UNIVERSITY OF IDAHO, ME DEPARTMENT IS PROHIBITED. |             | DIMENSIONS ARE IN INCHES<br>THIRD ANGLE PROJECTION |                  | Block<br>Project<br>Coordinate w/<br>Notes   |  |
|   |             | MATERIAL: 6061 T6 Aluminum                         |                  | <b>UNIVERSITY OF IDAHO<br/>ME DEPARTMENT</b> |  |
| DEFAULT TOLERANCES:   |             | DESCRIPTION: Female Lathe Part                     |                  | PART #: 1-01 QTY: 1                          |  |
| LINEAR:   | ANGULAR:    | CHECKED BY:  | DATE:            |  |  |
| X. ± .25  | X. ± 2      | DRAWN BY: Jake Gilles                              | DATE: 11/30/2016 |  |  |
| X.X ± .1  | X.X ± 1     | FILE NAME: Female Lathe Part.SLDPR                 | SCALE: 1:1       | SHEET: 3 OF 8                                |  |
| X.XX ± .01  | X.XX ± 0.30 |  |                  |  |  |
| X.XXX ± .002  |             |  |                  |  |  |



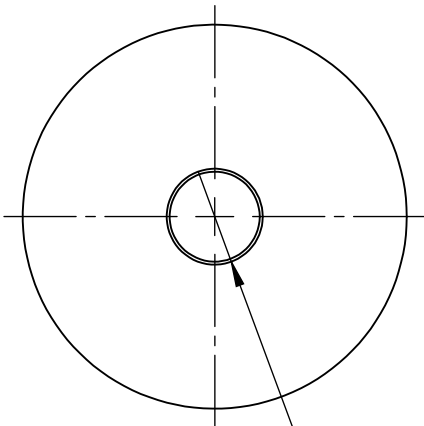
SCALE 1:1.5



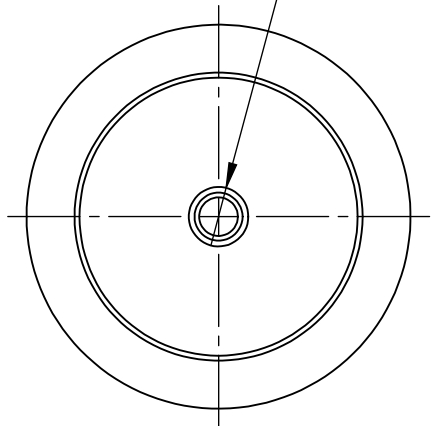
SCALE 1:2



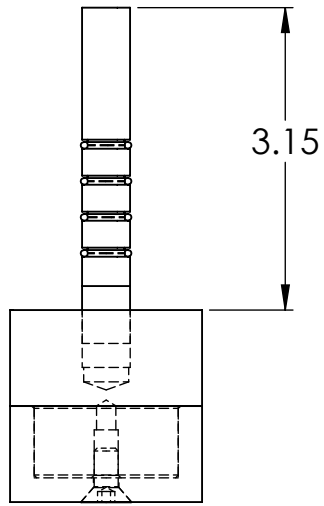
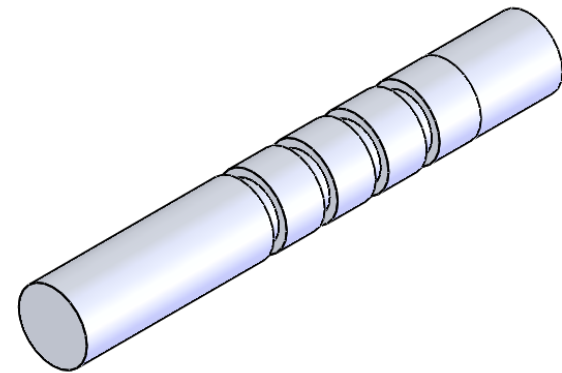
1/4-20 UNC -2B  $\nabla$  0.50  
 $\nabla$   $\phi$  0.31 x 82°



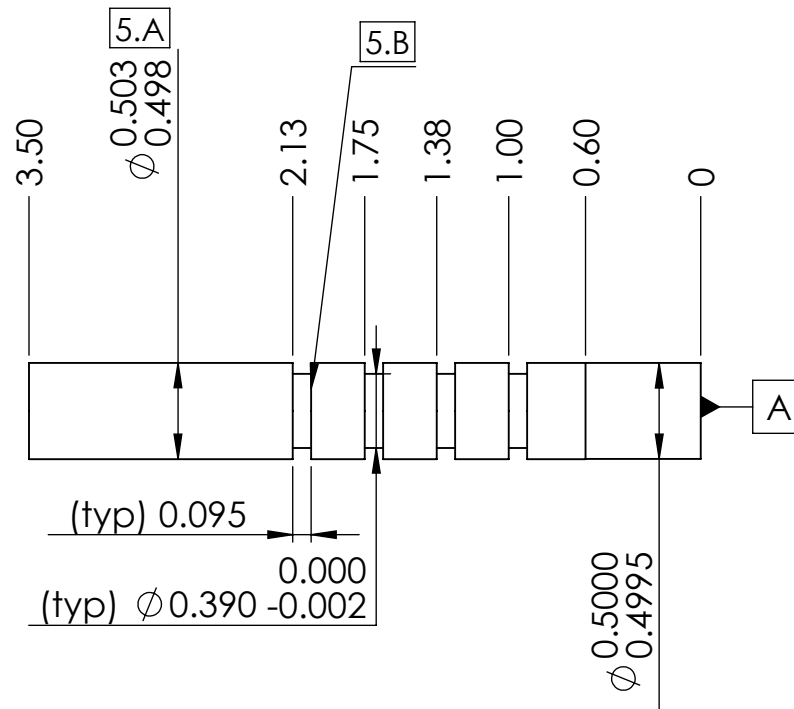
.500 PRESSFIT  $\nabla$  0.60



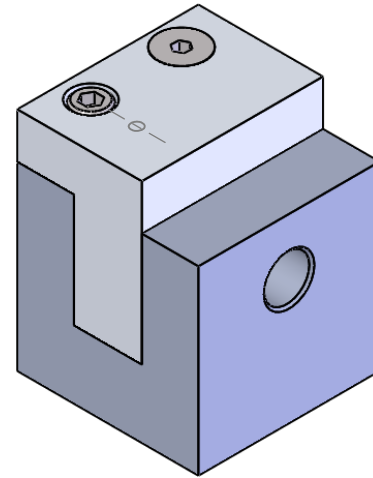
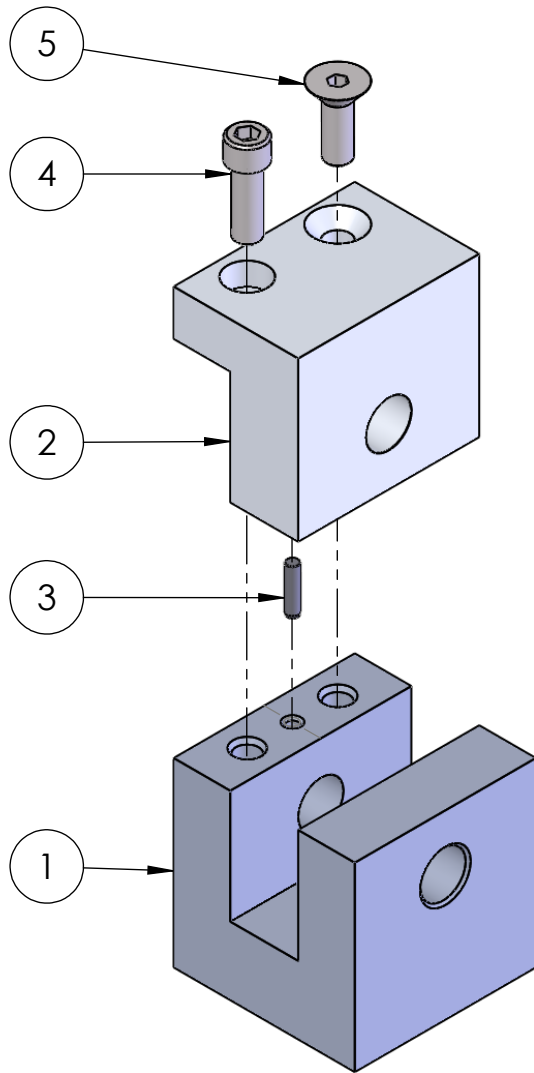
|   |   |  |                  |  |        |
|---|---|--|------------------|--|--------|
| <b>PROPRIETARY AND CONFIDENTIAL</b><br>THE INFORMATION CONTAINED IN THIS DRAWING IS THE SOLE PROPERTY OF UNIVERSITY OF IDAHO, ME DEPARTMENT. ANY REPRODUCTION IN PART OR AS A WHOLE WITHOUT THE WRITTEN PERMISSION OF UNIVERSITY OF IDAHO, ME DEPARTMENT IS PROHIBITED. |   | DIMENSIONS ARE IN INCHES<br>THIRD ANGLE PROJECTION |                  | Block Project<br>Coordinate w/<br>Notes      |        |
| DEFAULT TOLERANCES:   |   | DESCRIPTION: Male Lathe Part                       |                  | MATERIAL: 6061 T6 Aluminum                   |        |
| LINER:<br>X. ± .25<br>X.X ± .1<br>X.XX ± .01<br>X.XXX ± .002  | ANGULAR:<br>X. ± 2<br>X.X ± 1<br>X.XX ± 0.30' | CHECKED BY:  | DATE:            | <b>UNIVERSITY OF IDAHO<br/>ME DEPARTMENT</b> |        |
|   |   | DRAWN BY: Jake Gilles                              | DATE: 11/30/2016 | PART #: 1-02                                 | QTY: 1 |
|   |   | FILE NAME: Male Lathe Part.SLDPR                   | SCALE: 1:1       | SHEET: 4 OF 8                                |        |



SCALE 1:2

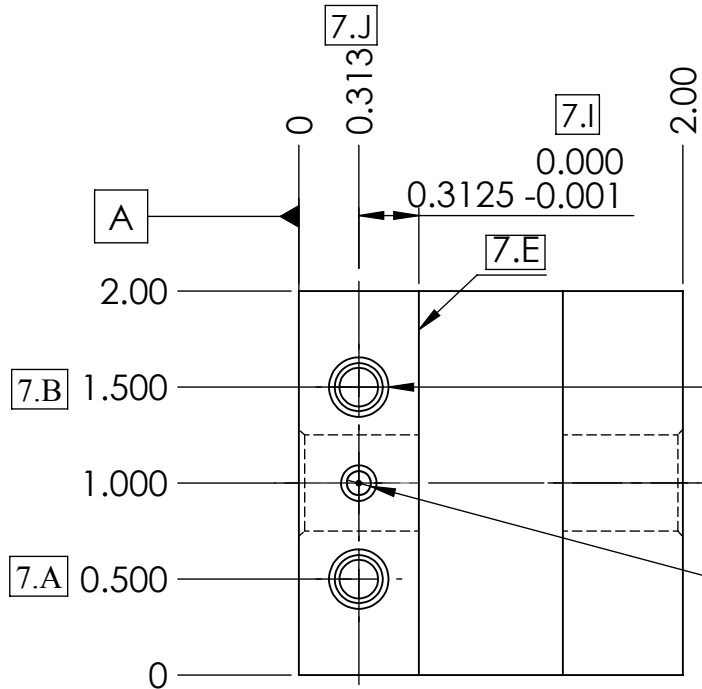


|   |  |  |  |   |  |
|---|--|--|--|---|--|
| <b>PROPRIETARY AND CONFIDENTIAL</b><br>THE INFORMATION CONTAINED IN THIS DRAWING IS THE SOLE PROPERTY OF UNIVERSITY OF IDAHO, ME DEPARTMENT. ANY REPRODUCTION IN PART OR AS A WHOLE WITHOUT THE WRITTEN PERMISSION OF UNIVERSITY OF IDAHO, ME DEPARTMENT IS PROHIBITED. |  | DIMENSIONS ARE IN INCHES<br>THIRD ANGLE PROJECTION |  | Block<br>Project<br>Coordinate w/<br>Notes            |  |
|   |  | MATERIAL: 6061 T6 Aluminum                         |  | <b>UNIVERSITY OF IDAHO<br/>         ME DEPARTMENT</b> |  |
| DEFAULT TOLERANCES:<br>LINEAR: X. ± .25<br>X.X ± .1<br>X.XX ± .01<br>X.XXX ± .002   |  | ANGLAR: X. ± 2<br>X.X ± 1<br>X.XX ± 0.30'          |  | DESCRIPTION: Lathe Pin                                |  |
|   |  | CHECKED BY: _____ DATE: _____                      |  | PART #: 1-04 QTY: 1                                   |  |
|   |  | DRAWN BY: Jake Gilles DATE: 11/30/2016             |  | SCALE: 1:1 SHEET: 5 OF 8                              |  |
|   |  | FILE NAME: Lathe Pin.SLDPRT                        |  |   |  |



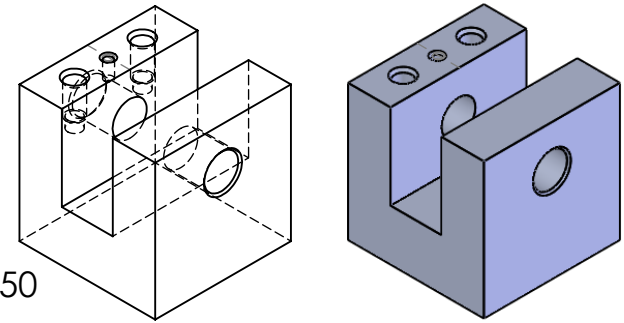
| ITEM NO. | PART NO | QTY. | DESCRIPTION             | SHEET NO |
|----------|---------|------|-------------------------|----------|
| 1        | 2-01    | 1    | Bottom Block            | 7        |
| 2        | 2-02    | 1    | Top Block               | 8        |
| 3        | 2-03    | 1    | 0.125 x 0.5 Dowel Pin   | ---      |
| 4        | 2-04    | 1    | 1/4"-20 x 3/8" SHCS     | ---      |
| 5        | 2-05    | 1    | 1/4"-20 x 3/8" CS Screw | ---      |

|   |   |  |                 |  |        |
|---|---|--|-----------------|--|--------|
| <b>PROPRIETARY AND CONFIDENTIAL</b><br>THE INFORMATION CONTAINED IN THIS DRAWING IS THE SOLE PROPERTY OF UNIVERSITY OF IDAHO, ME DEPARTMENT. ANY REPRODUCTION IN PART OR AS A WHOLE WITHOUT THE WRITTEN PERMISSION OF UNIVERSITY OF IDAHO, ME DEPARTMENT IS PROHIBITED. |   | DIMENSIONS ARE IN INCHES<br>THIRD ANGLE PROJECTION |                 | Block Project<br>Coordinate w/<br>Notes      |        |
| DEFAULT TOLERANCES:   |   | DESCRIPTION: Block Project Block Assembly          |                 | <b>UNIVERSITY OF IDAHO<br/>ME DEPARTMENT</b> |        |
| LINER:<br>X. ± .25<br>X.X ± .1<br>X.XX ± .01<br>X.XXX ± .002  | ANGULAR:<br>X. ± 2<br>X.X ± 1<br>X.XX ± 0.30' | CHECKED BY:  | DATE:           | PART #:                                      | QTY:   |
|   |   | DRAWN BY: Jake Gilles                              | DATE: 2/10/2017 | PART #: 2-00                                 | QTY: 1 |
|   |   | FILE NAME: 2-00 Block Assembly.SLDPR               | SCALE: 1:1.5    | SHEET: 6 OF 8                                |        |

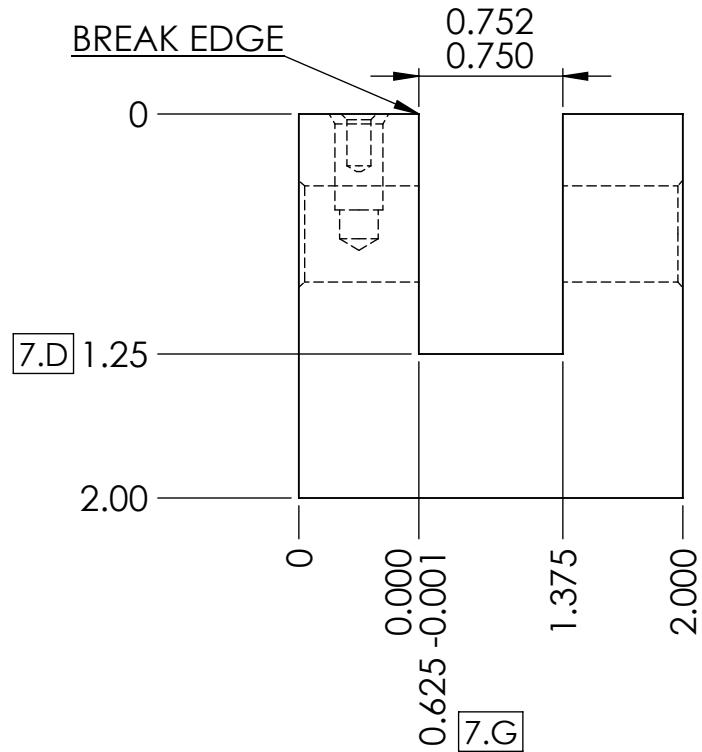


2X 1/4-20 UNC - 2B  $\nabla$  0.50  
 $\phi$  0.31 X 82°

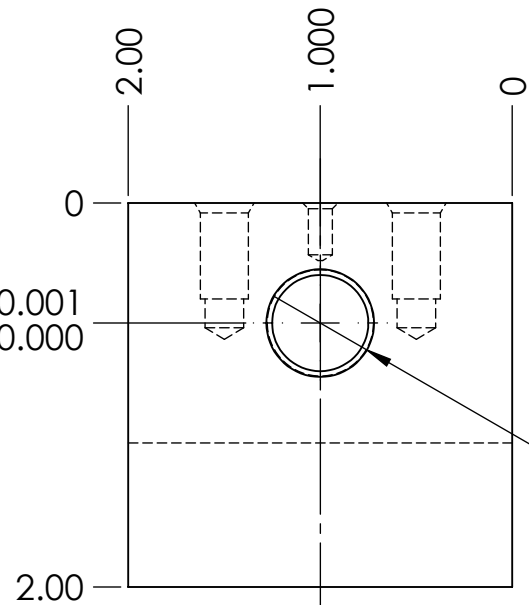
1/8" PRESS FIT  $\nabla$  0.30



Scale 1:2

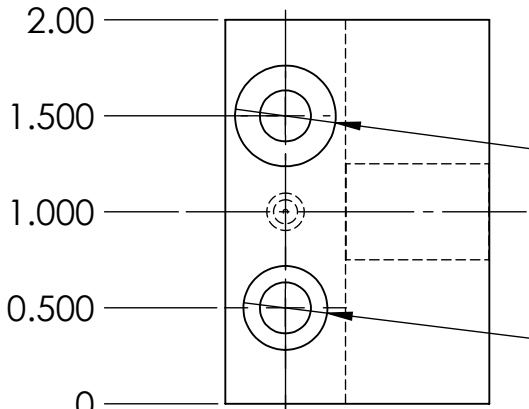


7.C 0.625  $\begin{matrix} +0.001 \\ 0.000 \end{matrix}$



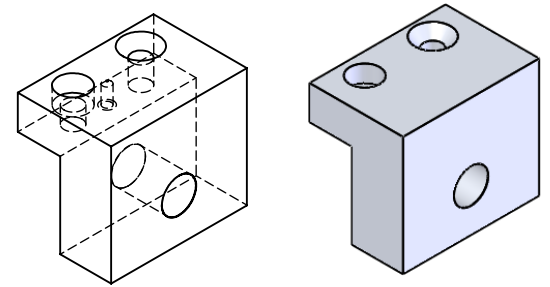
REAM  $\phi$  0.505 THRU  
 BREAK EDGE

|   |  |  |                 |  |               |
|---|--|--|-----------------|--|---------------|
| <b>PROPRIETARY AND CONFIDENTIAL</b><br>THE INFORMATION CONTAINED IN THIS DRAWING IS THE SOLE PROPERTY OF UNIVERSITY OF IDAHO, ME DEPARTMENT. ANY REPRODUCTION IN PART OR AS A WHOLE WITHOUT THE WRITTEN PERMISSION OF UNIVERSITY OF IDAHO, ME DEPARTMENT IS PROHIBITED. |  | DIMENSIONS ARE IN INCHES<br>THIRD ANGLE PROJECTION |                 | Block Project<br>Coordinate w/<br>Notes      |               |
| DEFAULT TOLERANCES:   |  | DESCRIPTION: Bottom half of project                |                 | <b>UNIVERSITY OF IDAHO<br/>ME DEPARTMENT</b> |               |
| LINEAR:<br>X.±.25<br>X.X±.1<br>X.XX±.01<br>X.XXX±.002   | ANGULAR:<br>X.± 2<br>X.X± 1<br>X.XX± 0 30' | CHECKED BY:  | DATE:           | PART #: 2-01                                 | QTY: 1        |
|   |  | DRAWN BY: Jake Gilles                              | DATE: 12/1/2016 | SCALE: 1:1                                   | SHEET: 7 OF 8 |
|   |  | FILE NAME: Bottom Block.SLDPRТ                     |                 |  |               |

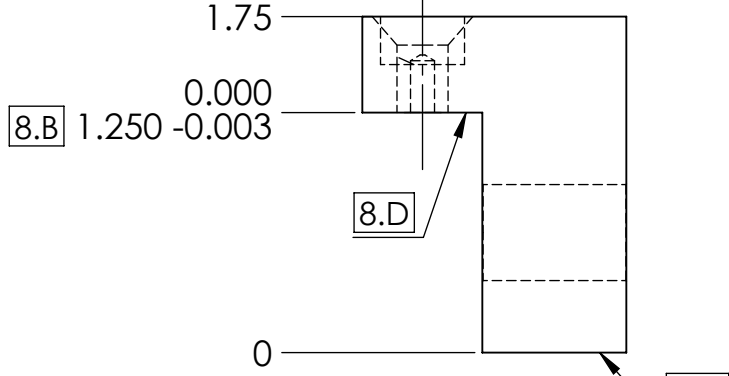


$\phi 0.27$  THRU ALL  
 $\surd \phi 0.52 \times 82^\circ$

$\phi 0.27$  THRU ALL  
 $\sqcap \phi 0.44 \nabla 0.25$



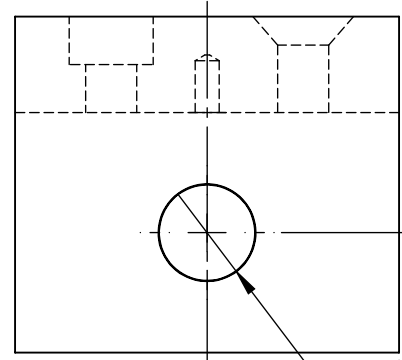
SCALE 1:2



8.B 1.250 -0.003

8.D

8.C



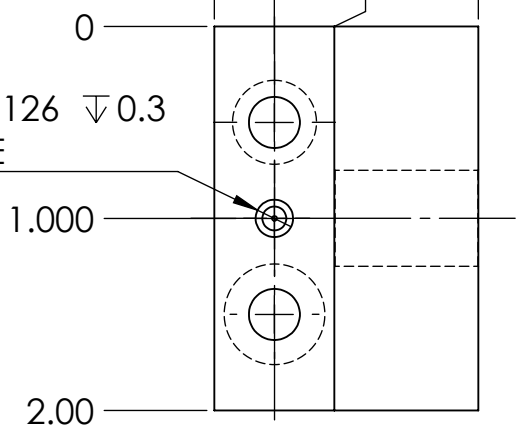
0.000 8.A  
 0.625 -0.001

8.H +0.001  
 0.000  
 8.G 0.000  
 0.000 -0.002

1.375  
 1.063  
 0.750  
 0

REAM  $\phi 0.505$  THRU 8.F  
 BREAK EDGE

8.E  
 REAM  $\phi 0.126 \nabla 0.3$   
 REAK EDGE



|   |  |  |       |   |                          |
|---|--|--|-------|---|--------------------------|
| <b>PROPRIETARY AND CONFIDENTIAL</b><br>THE INFORMATION CONTAINED IN THIS DRAWING IS THE SOLE PROPERTY OF UNIVERSITY OF IDAHO, ME DEPARTMENT. ANY REPRODUCTION IN PART OR AS A WHOLE WITHOUT THE WRITTEN PERMISSION OF UNIVERSITY OF IDAHO, ME DEPARTMENT IS PROHIBITED. |  | DIMENSIONS ARE IN INCHES<br>THIRD ANGLE PROJECTION |       | Block Project<br>Coordinate w/<br>Notes               |                          |
|   |  | MATERIAL: 6061 T6 Aluminum                         |       | <b>UNIVERSITY OF IDAHO<br/>         ME DEPARTMENT</b> |                          |
| DEFAULT TOLERANCES:<br>LINEAR: X. $\pm$ .25<br>X.X $\pm$ .1<br>X.XX $\pm$ .01<br>X.XXX $\pm$ .002   |  | DESCRIPTION: Male part of block project            |       | PART #: 2-02 QTY: 1                                   |                          |
| ANGULAR: X. $\pm$ 2<br>X.X $\pm$ 1<br>X.XX $\pm$ 0 30'  |  | CHECKED BY:  | DATE: | DATE: 11/29/2016                                      | SCALE: 1:1 SHEET: 8 OF 8 |
| DRAWN BY: Jake Gilles   |  | FILE NAME: Top Block.SLDPRT                        |       | SCALE: 1:1 SHEET: 8 OF 8                              |                          |