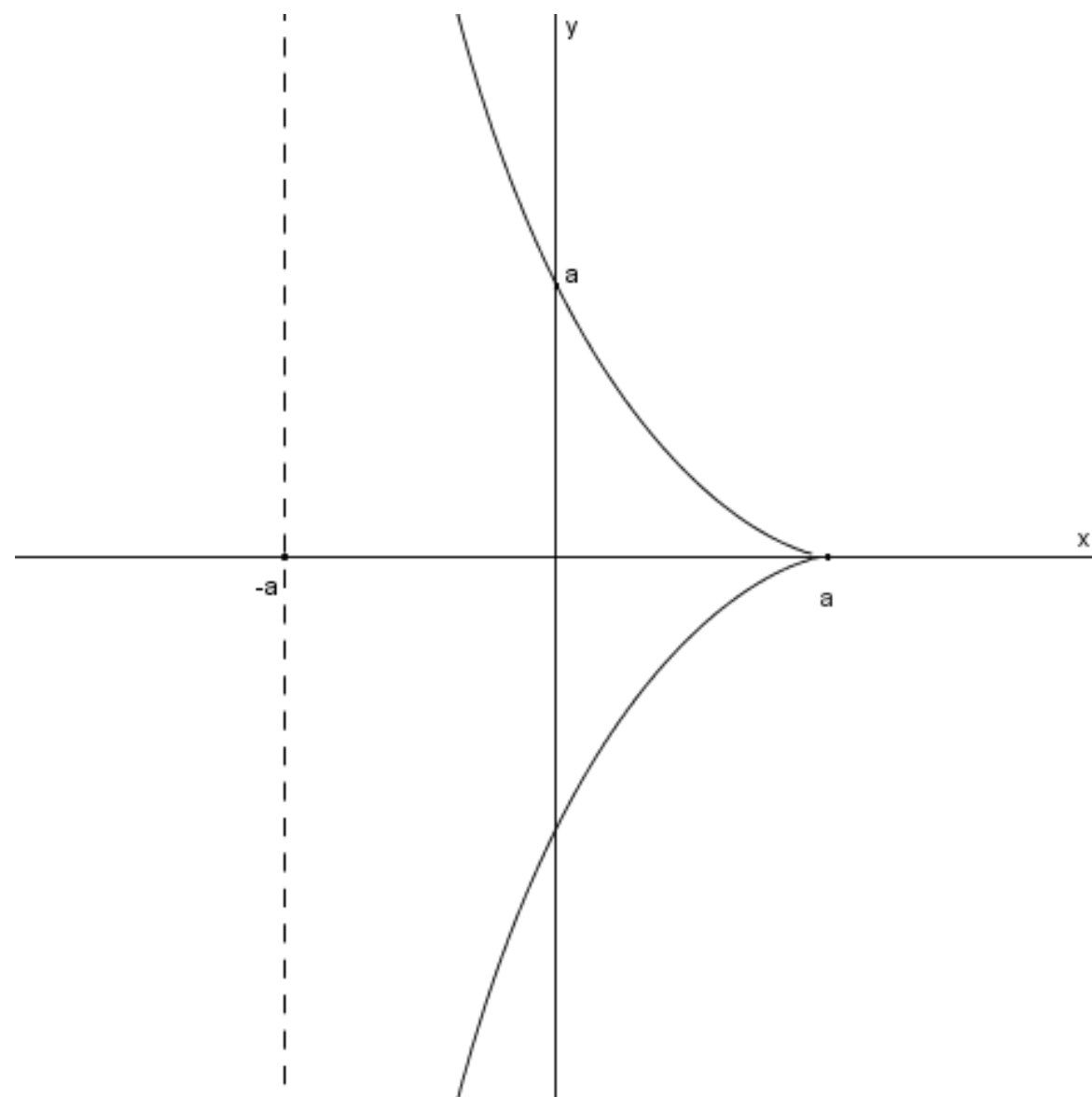


# Math Club Meeting

Join the Math Club to discuss classical examples of parameterizing curves using polynomial and rational functions! For example, around 180 B.C., Diocles wrote the book *On Burning-Glasses*, and one of the curves he considered was the cissoid. He used the curve to solve the problem of the duplication of the cube (trying to construct the cube root of 2 using ruler and compass). For a constant  $a > 0$ , the cissoid has equation  $y^2(a+x) = (a-x)^3$  and has the following graph:



---

**Tuesday, February 28**  
**4:30 pm**  
**TLC 149**

---

**Pizza included...**



**University  
of Idaho**

